



*Innovative  
Clean Air  
Solutions*

## **DP-65**

### **High Efficiency Pleated Filters**

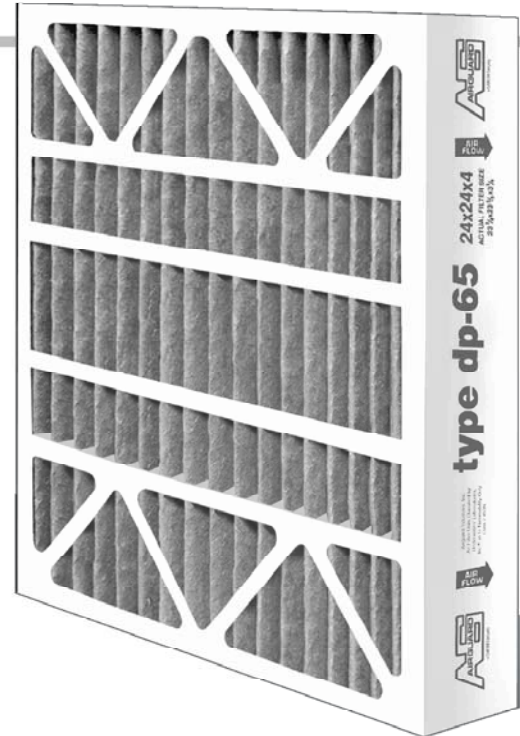
#### **For 500 FPM operation (4" filters)**

- True 50-55% efficiency
- MERV 11
- Low resistance
- Economically priced

For the highest efficiency available in a 4" thick pleated filter, the DP-65 has no equal. *No exaggerated claims; just documented, proven premium performance at 500 FPM face velocity. (2" DP-65 filters offer similar performance at 250 FPM.)*

#### **Compare 4" DP-65 Performance to Any Other Pleated Filters at 500 FPM**

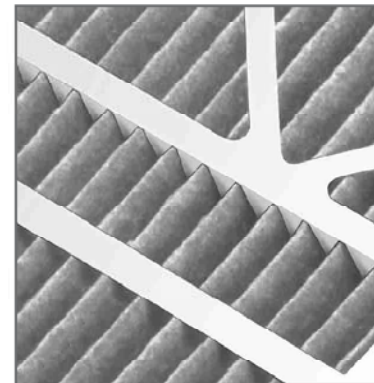
Initial Resistance	.58" W.G.
Initial Efficiency	30%
Average Efficiency	52%
Arrestance	94%
MERV Rating	11



**Heavy Duty Beverage Board Frame** - Moisture resistant, sturdy frame material stands up to rough handling, difficult service conditions, long service life.

**Two Piece Frame Construction** - Double wall thickness around the outer edge and integral die cut cross members provide strength and rigidity. DP-65 filters will not rack, warp or bend under normal handling or operating conditions.

**Pleat Stabilizers** - 4" thick DP-65 filters are designed with individual die cut fingers that separate and stabilize each pleat. Consistent pleat alignment enhances dusts holding capacity for longer service life.



**100% Adhesive Application** - The inside of the die cut frame is completely coated with adhesive to assure a solid bond at all points of contact. The die cut boxes are bonded to each other and the media pack is sealed inside the frame. The pleat tips are bonded to the diagonal support members.

**Media** - Microglass fiber media provides the highest efficiency available in a pleated filter. The high loft media design holds collected dirt as resistance builds. No unloading under heavy dirt loads or turbulent air flow. An expanded metal grid is laminated to the air leaving side to shape the pleats.

**Applications** - Recommended where maximum efficiency is desired and filter depth is limited to 4". Excellent prefilter. Extends life of high efficiency final filters.

# DP-65 OPERATING DATA *High Efficiency Pleated Filters*

## Standard Sizes

NOMINAL SIZE (INCHES) (W x H x D)	ACTUAL SIZE (INCHES) (W x H x D)	AIR FLOW CAPACITY 2" @ 250 FPM 4" @ 500 FPM	RATED INITIAL RESISTANCE (IN. W.G.) 2" @ 250 FPM 4" @ 500 FPM	RECOMMENDED FINAL RESISTANCE (IN. W.G.)	MEDIA AREA (SQ. FT)
12 x 24 x 2	11-3/8 x 23-3/8 x 1-3/4	500	.39"	1.2"	6.2
16 x 20 x 2	15-1/2 x 19-1/2 x 1-3/4	560	.39"	1.2"	6.7
16 x 25 x 2	15-1/2 x 24-1/2 x 1-3/4	700	.39"	1.2"	8.0
18 x 24 x 2	17-1/2 x 23-1/2 x 1-3/4	750	.39"	1.2"	9.3
20 x 20 x 2	19-1/2 x 19-1/2 x 1-3/4	700	.39"	1.2"	8.3
20 x 24 x 2	19-3/8 x 23-3/8 x 1-3/4	835	.39"	1.2"	9.9
20 x 25 x 2	19-1/2 x 24-1/2 x 1-3/4	870	.39"	1.2"	10.3
24 x 24 x 2	23-3/8 x 23-3/8 x 1-3/4	1000	.39"	1.2"	11.7
12 x 24 x 4	11-3/8 x 23-3/8 x 3-3/4	1000	.58"	1.2"	10.0
16 x 20 x 4	15-1/2 x 19-1/2 x 3-3/4	1120	.58"	1.2"	11.5
16 x 25 x 4	15-1/2 x 24-1/2 x 3-3/4	1400	.58"	1.2"	13.7
18 x 24 x 4	17-1/2 x 23-1/2 x 3-3/4	1500	.58"	1.2"	14.9
20 x 20 x 4	19-1/2 x 19-1/2 x 3-3/4	1400	.58"	1.2"	14.6
20 x 24 x 4	19-3/8 x 23-3/8 x 3-3/4	1670	.58"	1.2"	16.2
20 x 25 x 4	19-1/2 x 24-1/2 x 3-3/4	1740	.58"	1.2"	18.3
24 x 24 x 4	23-3/8 x 23-3/8 x 3-3/4	2000	.58"	1.2"	19.9

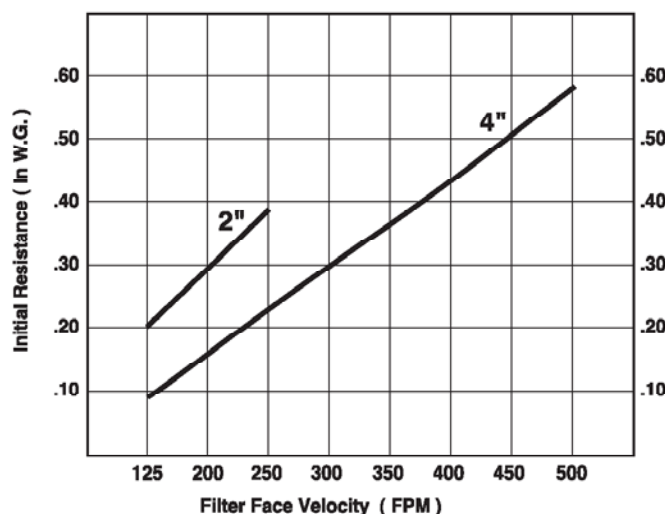
Performance data is based on the ASHRAE 52.1 and 52.2 Test Standards.

Performance tolerances conform to Section 7.4 of ARI Standard 850-93.

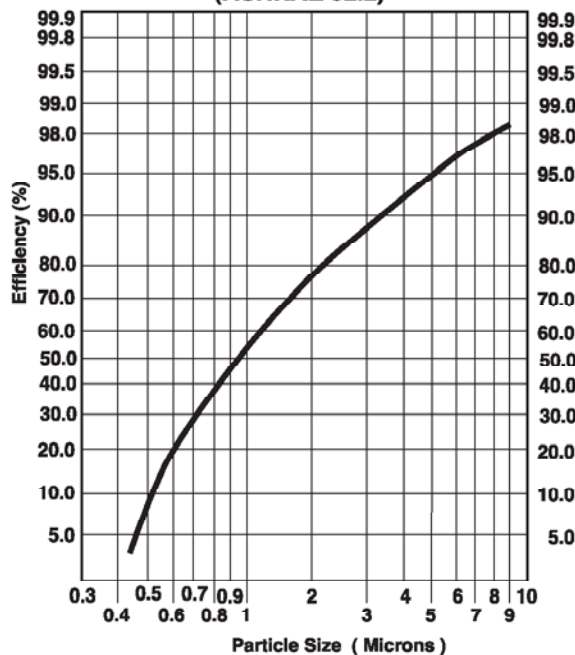
Continuous Operating Temperature Limit: 225°F (107°C)

Underwriters Laboratories, Inc. Classification: DP-65 Filters are classified U.L. Class 2 per U.L. Standard 900.

**Initial Resistance vs. Filter Face Velocity**



**Efficiency by Particle Size (Clean)  
(ASHRAE 52.2)**



CLARCOR Air Filtration Products  
P.O. Box 32578, Louisville, Kentucky 40232-2578 • 1-800-999-3458 • Fax 502-961-0930  
Visit our Web Site - [www.airguard.com](http://www.airguard.com) • E-Mail Address - [mailbag@airguard.com](mailto:mailbag@airguard.com)

Distributed by: